

THE HOSPITALIST & THE RESUSCITATIONIST



2019



MONTREAL, MAY 22-24, 2019



SCIENTIFIC PROGRAMME

THURSDAY MAY 23RD - DAY 1

0800-0820 - RESPIRATORY FAILURE ON THE WARDS - MALLEMAT
WHAT TO REACH FOR AND HOW TO MANAGE IT WHEN RESPIRATION FAILS ON THE WARDS.

0820-0840 - PHENOTYPING CARDIAC ARREST - SPIEGEL
DISCOVER A DIFFERENT PERSPECTIVE ON CARDIAC ARREST WITH GAME-CHANGING CLINICAL IMPLICATIONS.

0840-0900 - BLOOD BANK 101 - AJJAMADA
WHAT SHOULD I BE ORDERING AND WHAT SHOULD I EXPECT IT TO DO?

0900-0920 - SALVAGING THE AIRWAY. DUGGAN
A SIMPLE AND SMART APPROACH TO THE DIFFICULT AIRWAY IN RESPIRATORY FAILURE.

0920-0940 - ADVANCED POCUS-BASED MANAGEMENT OF CHF - ROLA
LEARN HOW VENOUS BEDSIDE SONOGRAPHY CAN RADICALLY CHANGE YOUR MANAGEMENT.

COFFEE WITH THE FACULTY

1020-1040 - PHARMACOLOGY PEARLS - VINCENT
A HANDFUL OF PHARMACOLOGY TIDBITS YOU PROBABLY DIDN'T KNOW, BUT NEED TO.

1040-1100 - GREEN MEDICINE: CAN WE HELP SAVE THE PLANET? ZIGBY
...WHICH IS PROBABLY MORE IMPORTANT THAN WHAT WE DO.

1100-1120 - CONTRAST-INDUCED NEPHROPATHY: 2019 UPDATE: MORRIS
MAKE THE RIGHT CHOICE FOR YOUR PATIENT BASED ON NEW AGENTS AND LITERATURE.

1120-1140 - A FREE UPGRADE TO YOUR WBC: THE NLR. FARKAS
IS THERE SOMETHING USEFUL HIDING IN PLAIN SIGHT IN YOUR CBC DIFFERENTIAL?

1140-1150 -RENAL PHYSIOLOGY DEMYSTIFIED: PV PULSATILITY & HYPONATREMIA - PATEL - USING VENOUS DOPPLER FOR METABOLIC DISEASE?

LUNCH

HOSPITALIST TRACK

1240-1310 EKG PEARLS - MULLIE
BRUSH UP ON SOME "DON'T MISS THIS ONE" DIAGNOSES.

1310-1340 NUTRITION IN THE HOSPITALIZED PATIENT - RUBINO
TASTY NUTRITION TIDBITS YOU SHOULD KNOW TODAY, AND WHAT'S ON THE HORIZON!

1340-1355 PERIOPERATIVE BASCIS - KAUD
A RAPID AND FOCUSED APPROACH TO YOUR PATIENT ABOUT TO GET SURGERIZED.

1400-1430 CLASSIC CASES WITH A TWIST - SKINNER
GETTING A GRIP ON RASHES AND REACTIONS.

CRITICAL CARE TRACK

1240-1300 - LIFE-THREATENED ASTHMATIC - MALLEMAT
KNOW WHEN IT'S TIME TO PULL OUT ALL THE STOPS, AND HOW TO DO IT.

1300-1320 - THE GREAT EPI DEBATE - SPIEGEL
TO GIVE OR NOT TO GIVE, THAT IS THE QUESTION.

1320-1340 - REVISITING CPR PHYSIOLOGY: WHAT DO WE KNOW? - TERAN
POCUS TEE GIVES SURPRISING INSIGHT INTO TRADITIONAL CPR PHYSIOLOGY THEORIES.

1340-1400 - CARDIOGENIC SHOCK 2019 - OLUSANYA
REVIEW TODAY'S APPROACH, INCLUDING LV ASSIST DEVICES AND ECMO.

1400-1420 - PH-GUIDED FLUID RESUSCITATION - FARKAS
TAILORING YOUR FLUIDS TO PHYSIOLOGY, NOT CULTURE.

1420-1440 - INTRA-ARREST HEMODYNAMICS: 1 SIZE DOESN'T FIT ALL - TERAN
HOW CAN POCUS TEE HELP YOU TAILOR RESUSCITATION TO YOUR PATIENT?

COFFEE WITH THE FACULTY

1500-1700 WORKSHOPS: OPEN FORMAT WHERE YOU CAN ATTEND AS MANY OR AS FEW AS YOU WOULD LIKE, AND SPEND AS MUCH TIME AS YOU CHOOSE. THIS WILL ENABLE YOU TO FOCUS ON THE AREAS YOU WANT TO GAIN THE MOST FROM:

POCUS APPROACH TO SHOCK AND RESPIRATORY FAILURE - FARKAS

PHARMACOLOGY CLINICAL CASES & PEARLS - VINCENT

RENOVASCULAR POCUS - HAYCOCK

GI POCUS - BAKER

NERVE BLOCKS FOR THE CRITICALLY ILL - WEIMERSHEIMER

EKG CASES - MULLIE

TROUBLESHOOTING THORACIC DRAINAGE - AJMO

INTRO TO RESUSCITATIVE TEE - TERAN

AIRWAY SALVAGE: BVM AND SURGICAL AIRWAY - DUGGAN

AI AND THE CLINICIAN - CLINICAL CASES - LYNN

US-GUIDED ACCESS & MID-LINE CATHETER INSERTION - SPIEGEL

POCUS AMA - SIUBA

NON-INVASIVE VENTILATION - PATEL

FRIDAY MAY 24TH - DAY 2

0800-0820 THE SCIENCE OF THE BOUGIE - SPIEGEL
LEARN ALL THE TIPS AND TRICKS TO MAKE YOUR BOUGIE GAME TOP-NOTCH.

0820-0840 APPENDICITIS AUDIT FROM THE COAL FACE - BAKER
DO YOU KNOW HOW TO USE POCUS TO ASSESS THE APPENDIX?

0840-0900 RENAL DOPPLER IN ACUTE CARE. HAYCOCK
UNDERSTAND THE PHYSIOLOGY BEHIND THE DOPPLER TRACINGS OF BOTH VENOUS AND ARTERIAL RENAL FLOW INDICES, AND HOW THIS MAY BE INTEGRATED INTO CLINICAL CARE.

0900-0920 METABOLIC RESUSCITATION: IS IT FOR REAL? FARKAS
TAKE A THOROUGH LOOK AT TODAY'S MOST CONTROVERSIAL SEPSIS THERAPY.

0920-0940 DIASTOLOGY FOR INTENSIVISTS - CHEN
ANOTHER TOOL IN THE HEMODYNAMIC TOOLBOX: SHOULD I BE USING IT?

COFFEE WITH THE FACULTY (+ART OF THE BOUGIE WORKSHOP - SPIEGEL)

1020-1100 ACID-BASE IN 3 PARTS - SPIEGEL
A PRACTICAL AND PHYSIOLOGICAL APPROACH TO UNDERSTANDING & TREATING ACID-BASE DISORDERS.

1100-1120 THE IVC DON'T LIE: ASK THE RIGHT QUESTION! KENNY
UNDERSTAND THE PHYSIOLOGY BEHIND THE CONTROVERSY AND WHY AN INTEGRATIVE APPROACH SHOULD REPLACE THE RECIPE APPROACH.

1120-1140 BLOOD PRESSURE: A CLOSER LOOK. MAGDER
WHAT IS TRULY BEHIND BLOOD PRESSURE, AND THE CLINICAL CAVEATS THAT ARE KEY FOR RESUSCITATIONISTS TO UNDERSTAND,

1140-1200 GUT POCUS - BAKER
REVIEW THE EVIDENCE, TECHNIQUE AND CLINICAL APPLICATIONS OF BOWEL POCUS

LUNCH (+ART OF THE BOUGIE WORKSHOP - SPIEGEL)

TRAUMA TRACK (ROOM D2-211)

1240-1300 PERMISSIVE HYPOTENSION: PERMISSIVE DEATH? NEMETH
FINDING THE SWEET SPOT IN THIS DOUBLE-EDGED THERAPEUTIC SWORD.

1300-1320 THORACIC TRAUMA - HAYCOCK
DEVELOP A RAPID AND SYSTEMATIZED APPROACH.

1320-1340 MASSIVE TRANSFUSION - WEIMERSHEIMER
WHY, WHAT, WHEN AN HOW? AN UPDATE.

1340-1400 To REBOA OR NOT To REBOA - HAYCOCK
UNDERSTAND THE PRINCIPLES AND APPLICATION OF THIS NEW TWIST ON AN OLD TRICK.

1400-1420 TRAUMATIC CARDIAC ARREST: HOW TO AVOID KILLING THE DEAD! NEMETH
TRAUMA ARREST IS NOT MEDICAL ARREST: CHANGING YOUR MINDSET AND REFLEXES.

CRITICAL CARE TRACK (AUDITORIUM)

1240-1300 INHALATION THERAPY FOR ACUTE RV FAILURE. DENAULT
A MASTERCLASS IN MANAGING THIS LETHAL CONDITION. REVIEW THE INDICATIONS AND APPLICATION OF THESE THERAPIES NO SERIOUS RESUSCITATIONIST SHOULD BE WITHOUT.

1300-1320 ADVANCED DOPPLER FOR THE INTENSIVIST - KENNY
WHERE CAN DOPPLER MAKE YOU SHARPER?

1320-1340 PMSA: IS THERE A CLINICAL USE? OLUSANYA
APPLYING CIRCULATORY PHYSIOLOGY AT THE BEDSIDE: CAN I AND SHOULD I USE THIS ?

1340-1400 Got ROSC! Now WHAT?. TERAN
WHAT ARE THE CRITICAL REFLEXES TO DEVELOP AFTER A GLIMMER OF HOPE HAS BEEN RESTORED? MAKING THE MOST OF YOUR RESUSCITATION.

1400-1420 - INSIGHTS ON DELIRIUM USING POCUS. DENAULT
A BLEEDING-EDGE TALK ON AN ENTIRELY NEW VIEWPOINT OF DELIRIUM. HAVE WE BEEN MISSING THIS FOR DECADES?

COFFEE WITH THE FACULTY

1500-1700 WORKSHOPS

NEURO-POCUS (ONSD/TCD) - SCOTT/CHEN

VENOUS POCUS - DENAULT

INTRO TO RESUSCITATIVE TEE - TERAN

REBOA - HAYCOCK

ECMO - OLUSANYA

SIM CASES - FARKAS & SIGNORI

SHOCK POCUS - BAKER

JON-EMILE KENNY'S ADVANCED PHYSIOLOGY & VENTILATORS

AI AND THE CLINICIAN - CLINICAL CASES - LYNN

POCUS AMA - WEIMERSHEIMER, SIUBA

THE FACULTY

THE HEAVY HITTERS:

ANDRE DENAULT - FROM THE MONTREAL HEART INSTITUTE, INTERNIST/ANAESTHETIST/INTENSIVIST EXTRAORDINAIRE NOT ONLY BUSY SAVING LIVES BUT ACTUALLY GENERATING THE EVIDENCE BEHIND WHAT WE ARE DOING. THE WORLD TEE GURU.

SHELDON MAGDER - A MCGILL UNIVERSITY CARDIOLOGIST/INTENSIVIST AND CRITICAL CARE PHYSIOLOGY ICON. ONE OF THE GIANTS ON WHOSE SHOULDERS WE STAND.

THE TALENT:

LISSA AJJAMADA - LAST YEAR'S "BEST TALK" WINNER RETURNS. ALWAYS OUR GO-TO FOR ENIGMATIC HEME MYSTERIES.

MARIA RUBINO - A GI DOC WITH A PENCHANT FOR NUTRITION, SHE TACKLES ONE OF THE MOST IMPORTANT YET NEBULOUS TOPICS IN ACUTE CARE.

JEAN ZIGBY - THE CO-FOUNDER OF SYNERGIE SANTE ENVIRONMENT, THIS PALLIATIVE CARE PHYSICIAN WILL FOCUS ON HOW HEALTH CARE NEEDS TO BE GREENER TO AVOID HAVING OUR PLANET IN PALLIATIVE CARE... PERHAPS THE MOST IMPORTANT THING OF ANYTHING WE DO.

ANDREANE VINCENT - THIS YEAR'S DESIGNATED HITTER FROM OUR ALL-STAR PHARMACIST SQUAD.

JOE NEMETH - THE MAN BEHIND MCGILL'S ED TRAUMA PROGRAM, ALWAYS LOOKING OVER THE HORIZON FOR THE FUTURE OF ER AND TRAUMA RESUSCITATION.

NATALIE SKINNER - A GENERAL PRACTITIONER WITH A UNIQUE DERMATOLOGY EXPERIENCE, SHE HAS BEEN TRAINING MCGILL RESIDENTS IN A NO-NONSENSE APPROACH TO DERMATOLOGY.

DANIEL KAUD - AN INTERNIST WHO BLENDS A CLASSIC OSLERIAN APPROACH WITH A MODERN TWIST. ROUNDS WITH HANDHELD POCUS.

LOUIS MULLIE - AN UP-AND-COMING INTERNIST WITH OUT-OF-THE-BOX IDEAS.

SHARAD PATEL - THIS NEPHRO-INTENSIVIST IS BREAKING NEW GROUND IN CLINICAL POCUS APPLICATIONS.

JEFF SCOTT - AN ED-INTENSIVIST WITH A NEURO-SLANT BRINGS US SOME SERIOUS TCD GAME.

JUDY MORRIS - ER DOC WITH A NEPHRO TWIST WHO WILL BE SHINING SOME LIGHT ON SOME KEY CONTROVERSIES.

THE #FOAMED CREW:

JOSH FARKAS / @PULMCRI - NO ONE BLENDS EVIDENCE, PHYSIOLOGY, PHARMACOLOGY AND INNOVATION BETTER THAN HIM. THE MAN BEHIND THE MYTHBUSTING PULMCRI.COM, AND NOW THE INTERNET BOOK OF CRITICAL CARE!

KYLIE BAKER / @KYLIEBAKER888 - DON'T LET THE HUMBLE DEMEANOR FOOL YOU. SHE IS AN ER AND POCUS MASTER WE CAN ALL LEARN FROM.

HANEY MALLEMAT / @CRITICALCARENOW - NOTHING SHORT OF A LEGEND ON THE #FOAMED SCENE, THIS POCUS GURU, ED/CC EXPERT AND THE MASTER OF THE STAGE IS ALWAYS PUSHING THE ENVELOPE.

JON-EMILE KENNY / @HEART_LUNG - A PHYSIOLOGY JEDI MASTER, HE IS THE CREATOR OF HEART-LUNG.ORG AND THE VOICE BEHIND THE POWERFUL ANALYSES AT PULMCCM.COM.

RORY SPIEGEL / @EMNERD - COMBINING AN ALMOST ALARMING ABILITY TO CRITICALLY DISSECT AND APPRAISE THE LITERATURE WITH SOME SERIOUS CLINICAL KNOW HOW, THIS GUY TAKES ALL OUR GAMES TO A HIGHER LEVEL.

ROBERT CHEN @OTTAWAHEARTROB - A FIRST-GEN POCUS MASTER, THIS ANAESTHETIST/INTENSIVIST HAS BEEN DOING WHAT THE REST OF US WILL BE DOING IN THE NEXT DECADE. DON'T MISS.

SEGUN OLUSANYA @ICEMAN_EX - ANOTHER ONE WHO TRIES TO GO UNDER THE RADAR, THERE IS ESSENTIALLY NOTHING IN CRITICAL CARE OR RESUSCITATION THAT HAPPENS THAT HE HASN'T ANALYZED, BROKEN DOWN AND APPLIED.

FELIPE TERAN @FTERANMD - RAPIDLY BECOMING "THE MAN" IN RESUS TEE, HE IS PUSHING THE FIELD OF ARREST SCIENCE AT AN INCREDIBLE PACE, AND WITH TEE, BRINGING UNIQUE INSIGHTS IN ITS PHYSIOLOGY.

KORBIN HAYCOCK @KHAYCOCK2 - A #FOAMED ROOKIE, BUT HAS BEEN CONTRIBUTING SOME REAL FUEL TO THE #FOAMED COMMUNITY FIRE. CLINICALLY, NO ROOKIE HERE: AN ED DOC WHOSE CUTTING-EDGE DOWNSTAIRS CARE IS MIND-BLOWING!

LAURA DUGGAN @DRLAURADUGGAN - A #FOAMED ANASTHESIA-AIRWAY GODDESS, WHATEVER YOU DO, DON'T MISS HER WORKSHOP, AND BE SURE TO CORNER HER WITH YOUR AIRWAY CLINICAL QUESTIONS!

PETER WEIMERSHEIMER @VTEMSONO - AN ER POCUS BEAST, DON'T LET THE TERMINATOR LOOK FOOL YOU. THERE IS SERIOUS FINESSE AND SKILL HERE. DON'T MISS THE NERVE BLOCKS FOR ICU DOCS WORKSHOP!

PHILIPPE ROLA @THINKINGCC - JUST A GUY WHO LOVES CC, PHYSIOLOGY AND POCUS, AND HAS A KNACK FOR PULLING THE RIGHT PEOPLE TOGETHER TO MAKE SOMETHING HAPPEN!

THE HOSPITALIST POCUS COURSE

H&R2019 PRE-CONGRESS COURSE

MONTREAL, MAY 22, 1300-1700

RM. D2-211

H&R2019

LEARN ABSOLUTELY NECESSARY SKILLS FOR THE DAY-TO-DAY MANAGEMENT OF YOUR HOSPITALIZED PATIENTS. IT DOESN'T MATTER HOW GOOD A CLINICIAN YOU ARE, WITH ULTRASOUND YOU WILL BE A BETTER ONE. LEARN FROM A WORLD-CLASS CLINICIAN FACULTY HOW TO ASSESS THE IVC FOR A NUMBER OF CLINICAL SCENARIOS, HOW TO ASSESS LUNGS, DO BASIC CARDIAC VIEWS, DIAGNOSE OR RULE OUT HYDRONEPHROSIS, A BLOCKED FOLEY, AND DIAGNOSE AND SAFELY TAP ASCITES OR PLEURAL EFFUSIONS. PRACTICE ON NORMAL VOLUNTEERS AND VOLUNTEER PATIENTS WITH TRUE PATHOLOGY. YOUR PATIENTS NEED YOU TO KNOW THIS.

LIMITED SPOTS. 300CAN\$

REGISTER AT : CCUSINSTITUTE.WIXSITE.COM/CCUS/EVENTS/THE-HOSPITALIST-THE-RESUSCITATIONIST-2019

FACULTY: ROLA,/HAYCOCK/BAKER/OLUSANYA/SPIEGEL/SCOTT

PARTICIPANTS: 18-20

SKILLS STATIONS:

1. IVC (ROLA)

OBJECTIVES: FIND IVC FROM ALL ANGLES. ASSESS IN BOTH AXES THRU VISIBLE LENGTH. UNDERSTAND PHYSIOLOGY. IDENTIFY HEPATIC VEINS.

2. LUNG (OLUSANYA)

OBJECTIVES: SHOW NORMAL "A" PATTERN, "B" PATTERN, NOTE IMPORTANCE OF FINDING DIAPHRAGM TO DEFINE THORAX VS ABDOMEN, UNDERSTANDING "KNUCKLES TO BED" FOR ASSESSING EFFUSION, LUNG SLIDING IN B- AND M-MODES.

3. HEART 1 (SPIEGEL)- SUBCOSTAL AND APICAL VIEWS

4. HEART 2 (SCOTT)- PARASTERNAL VIEWS

OBJECTIVES: IDENTIFY PERICARDIAL FLUID, ASSESS RV:LV RATIO, ESTIMATE LVEF, TAPSE. IF TIME/LEVEL PERMITS MAY GO INTO MORE ADVANCED SKILLS SUCH AS WMA'S, PAP.

5. RENAL/GU (HAYCOCK)

OBJECTIVES: SIZE, HYDRONEPHROSIS, BLADDER (TALK ABOUT FOLEY DYSFUNCTION).

6. GI (BAKER)

OBJECTIVES: IDENTIFY ASCITES, INTRALUMINAL FLUID, BOWEL WALL EDEMA, APPENDIX.

CLINICAL STATIONS:

7. PROCEDURAL (ROLA)

8. SHOCK (HAYCOCK)

9. RESPIRATORY FAILURE (SPIEGEL)

OSCE CASES (BAKER/SCOTT/OLUSANYA)

MODEL: MS. N (ASCITES, RT PL EFF), MR.L. (SEVERE CMP, ASCITES), MS. T (PHTN, ASCITES, EFFUSIONS)

OBJECTIVES: IN 6 MINUTES. IDENTIFY MAJOR FINDINGS AND UNIFY DIAGNOSIS.



SCHEDULE:

1300-1530 - 15 MINUTE ROTATIONS THRU SKILLS STATIONS 1-6

1530-1630 - 20 MINUTE ROTATIONS THRU CLINICAL STATIONS 7-9 AND OSCE EXAM (1 PERSON PER)

1630-1700 - MCQ EXAM & AMA PRACTICE, CERTIFICATES.

LOCATION: RM. D2-211, SANTA CABRINI HOSPITAL, MONTREAL, QC, CANADA.



CRITICAL CARE PROCEDURES COURSE

H&R2019 PRE-CONGRESS COURSE

MONTREAL, MAY 22, 0900-1200

RM. D2-211

H&R2019

WELCOME! WE'LL GO OVER THORACIC AND ABDOMINAL PIGTAIL INSERTION, BEDSIDE PERCUTANEOUS TRACHEOSTOMY AND EMERGENCY AIRWAY MANAGEMENT, USING MANIKINS AND NATURAL SIMULATORS. PLENTY OF PRACTICE, UNTIL YOU'RE COMFORTABLE WITH THE TECHNIQUES. BY THE END OF THIS ACTIVITY, PARTICIPANTS SHOULD BE ABLE TO INDEPENDENTLY INSERT PIGTAIL CATHETERS AND PERFORM AN EMERGENCY SURGICAL AIRWAY, AND BE ABLE TO PERFORM A PERCUTANEOUS TRACHEOSTOMY WITH THE BACKUP AND SUPERVISION OF AN EXPERIENCED OPERATOR.

REGISTER AT : CCUSINSTITUTE.WIXSITE.COM/CCUS/EVENTS/THE-HOSPITALIST-THE-RESUSCITATIONIST-2019

FACULTY: AJMO/ZAMBRANA/TREMBLAY/FARKAS/ROLA

SCHEDULE:

0900-0945 - BEDSIDE PERCUTANEOUS TRACHEOSTOMY - LEARN THE TECHNIQUE OF BRONCHOSCOPIC GUIDED PERCUTANEOUS TRACHEOSTOMY, BOTH FROM THE BRONCHOSCOPIST'S AND THE TRACHEOSTOMY ROLES. (TREMBLAY)

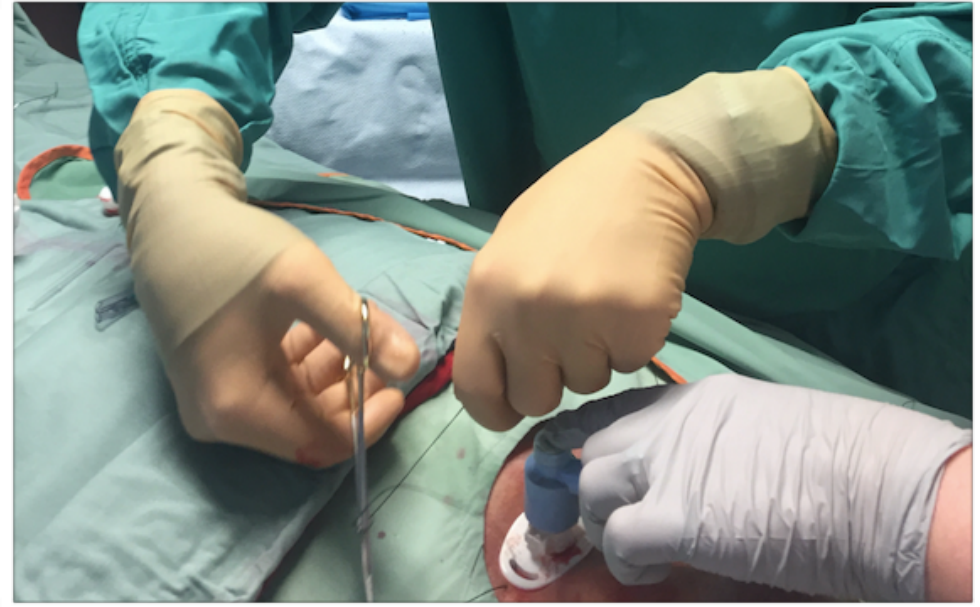
0945-1030 - POCUS-GUIDED PIGTAIL INSERTION - USING NATURAL SIMULATORS. PRACTICE THE TECHNIQUE UNDER SUPERVISION AND REVIEW THE PEARLS AND PITFALLS RELATED TO THE THORACIC AND ABDOMINAL TECHNIQUE. PRACTICE POCUS SKILLS ON REAL PATIENTS. (ZAMBRANA/AJMO)

BREAK

1040-1110 - SURGICAL AIRWAY - LEARN AND PRACTICE THE SCALPEL-FINGER-BOUGIE TECHNIQUE ON MANIKINS AND UNDERSTAND ITS INDICATIONS. (FARKAS)

1110-1130 - OPEN PRACTICE AND QUESTIONS (AJMO/FARKAS)

1130-1200 - PRACTICAL EXAM (ROLA)



THE HOSPITALIST & THE RESUSCITATIONIST

This programme has benefitted from an unrestricted educational grant from the following sponsors (listed alphabetically):

Cook

Fisher-Paykel Healthcare

GE Healthcare

Maquet-Gettinge

Masimo

Medquest

MD Management

Medtronic

Novartis

Teleflex